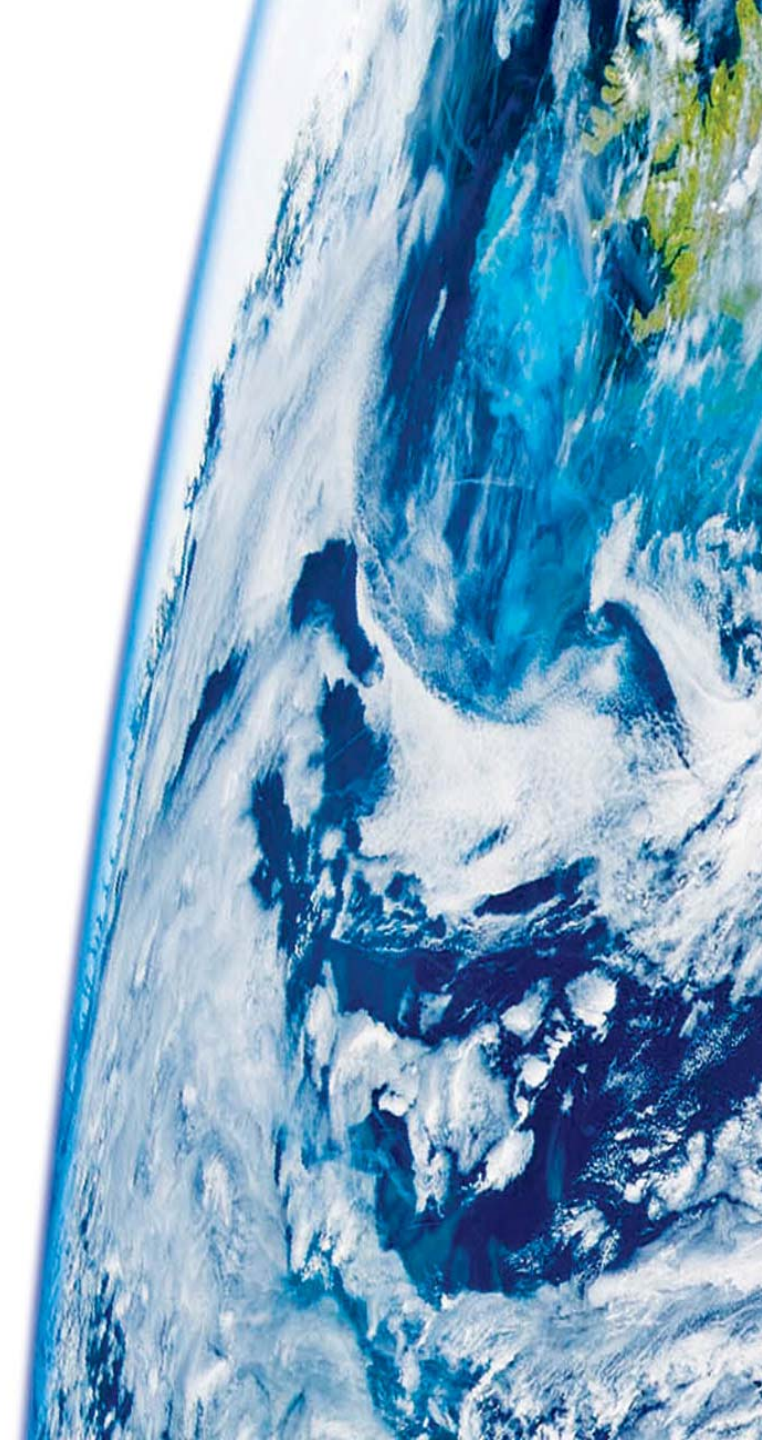


Brussels Workshop Jan 2010

Scientific Collections International (SciColl)

An international coordinating
mechanism

Richard Lane,
Chair SciColl project
(Natural History Museum, London)





Marine Zoology, NHM London



Herbarium, NHM London



Millenium seed bank, Kew



Photo National Ice Core Laboratory, USGS

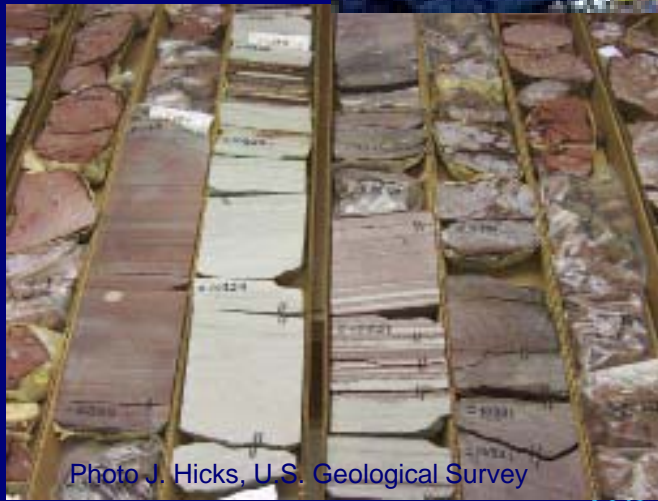


Photo J. Hicks, U.S. Geological Survey



Scientific Collections – key points

- Selected & Structured samples of the world around us
- Vouchers / samples :
 - repeatable, verifiable
 - can be re-examined with new tools (cf observations)
- Reference system of existing information
- Source of new knowledge and ideas
- Can be arrayed, distributed infrastructure



Paranal Observing Platform with AT1 and AT2

ESO PR Photo 07a/05 (14 March 2005)

© European Southern Observatory



Collections are Part of our Scientific Infrastructure

SciColl: International Coordinating Mechanism

Two main benefits

- Ensure collections are efficient and integrated infrastructures

SciColl: International Coordinating Mechanism

Two main benefits

- Ensure collections are efficient and integrated infrastructures
 - Best practice for access, management
 - Value for money
 - Connectivity

SciColl: International Coordinating Mechanism

Two main benefits

- Ensure collections are efficient and integrated infrastructures
- Enable more science to be done, especially interdisciplinary research

SciColl: International Coordinating Mechanism

Two main benefits

- Ensure collections are efficient and integrated infrastructures
- Enable more science to be done, especially interdisciplinary research

This will lead to the sustainability and development of collections

Background – GSF Scientific Collections initiative

- Proposal by Dutch delegation, GSF-14 (Feb 2006)
- Exploratory workshops: Leiden June 2007, Washington, July 2008
- Formal approval of GSF Oct 2008
 - Planning for 18 months, governance, sustainability
 - Expand disciplinary and international participation
- Planning meetings: London, March 2009 (SciColl); Berlin Sept 2009

Scientific Collections International

SciColl – where are we now?

- Strategic planning and programme of work
- Governance and management
- Budget and financing start-up phase
- Outreach to scientific disciplines and countries

Strategic planning and programme of work

Mission

help scientific collections and their host institutions increase their effectiveness and the return on investment in the long-term management of collections

catalyse ground-breaking interdisciplinary research that relies on access to scientific collections and their associated information.

Strategic planning and programme of work

Workplan:

- Best practice in management of collections
 - Best practice for access, management
 - Value for money
 - Connectivity

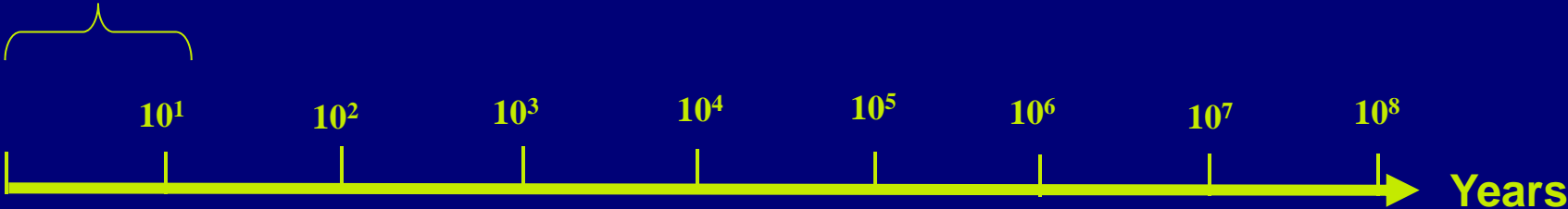
Strategic planning and programme of work

Workplan:

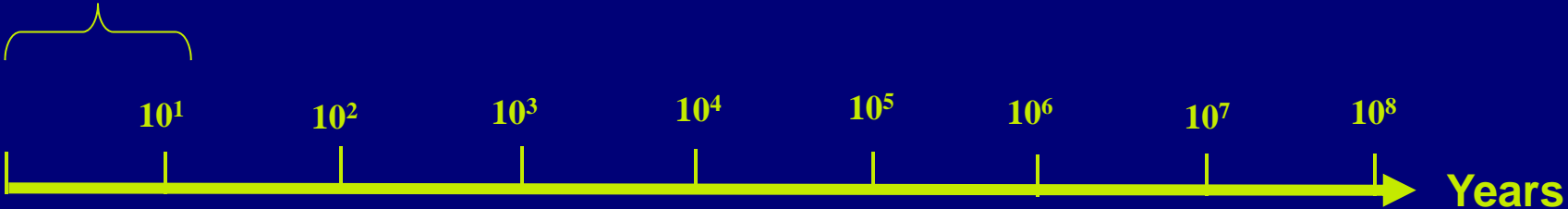
- Best practice in management of collections
- Pilot project on Global Environment Change



Invasive Organisms Emerging Diseases



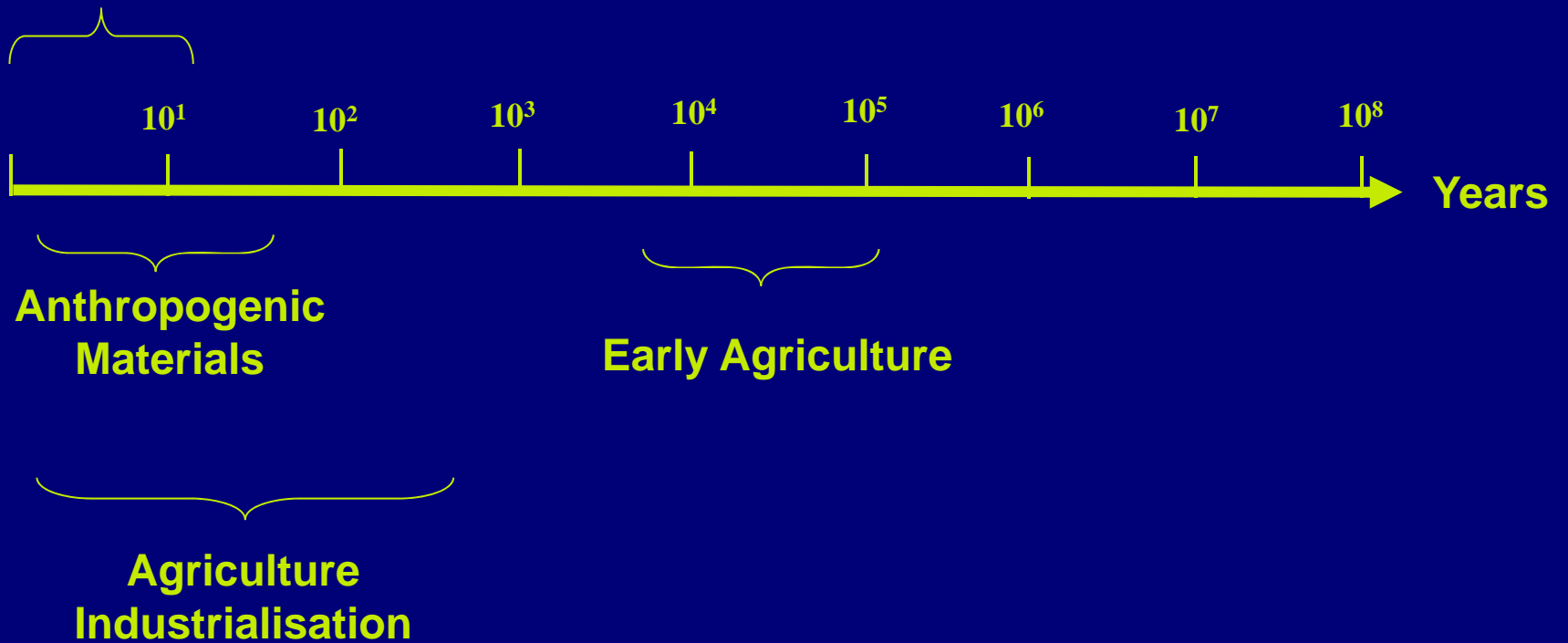
**Invasive Organisms
Emerging Diseases**

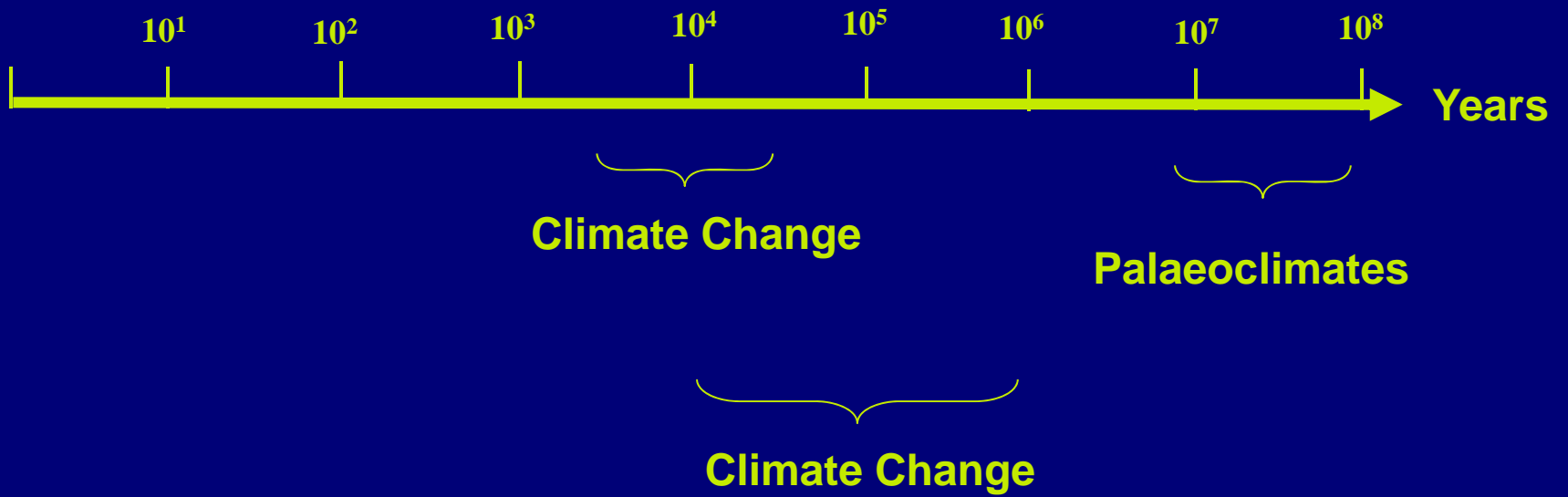


**Anthropogenic
Materials**

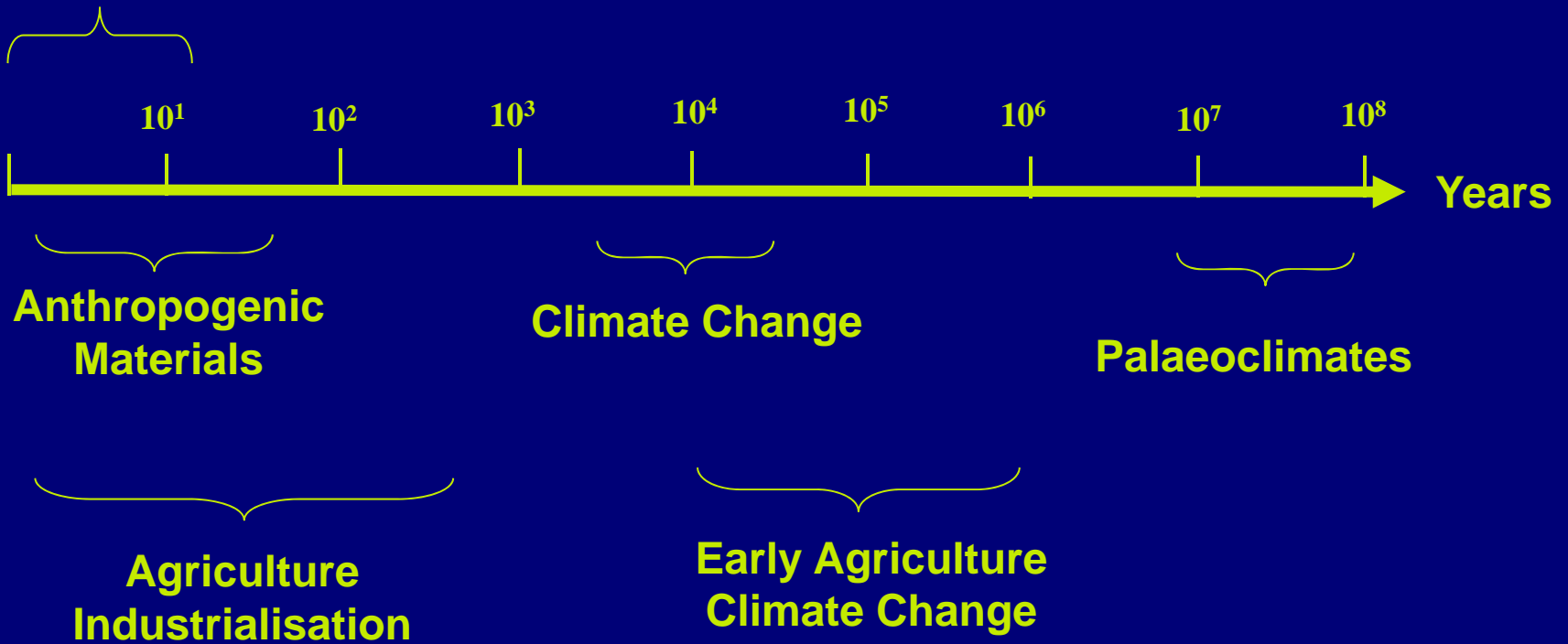
**Agriculture
Industrialisation**

Invasive Organisms Emerging Diseases





Invasive Organisms Emerging Diseases

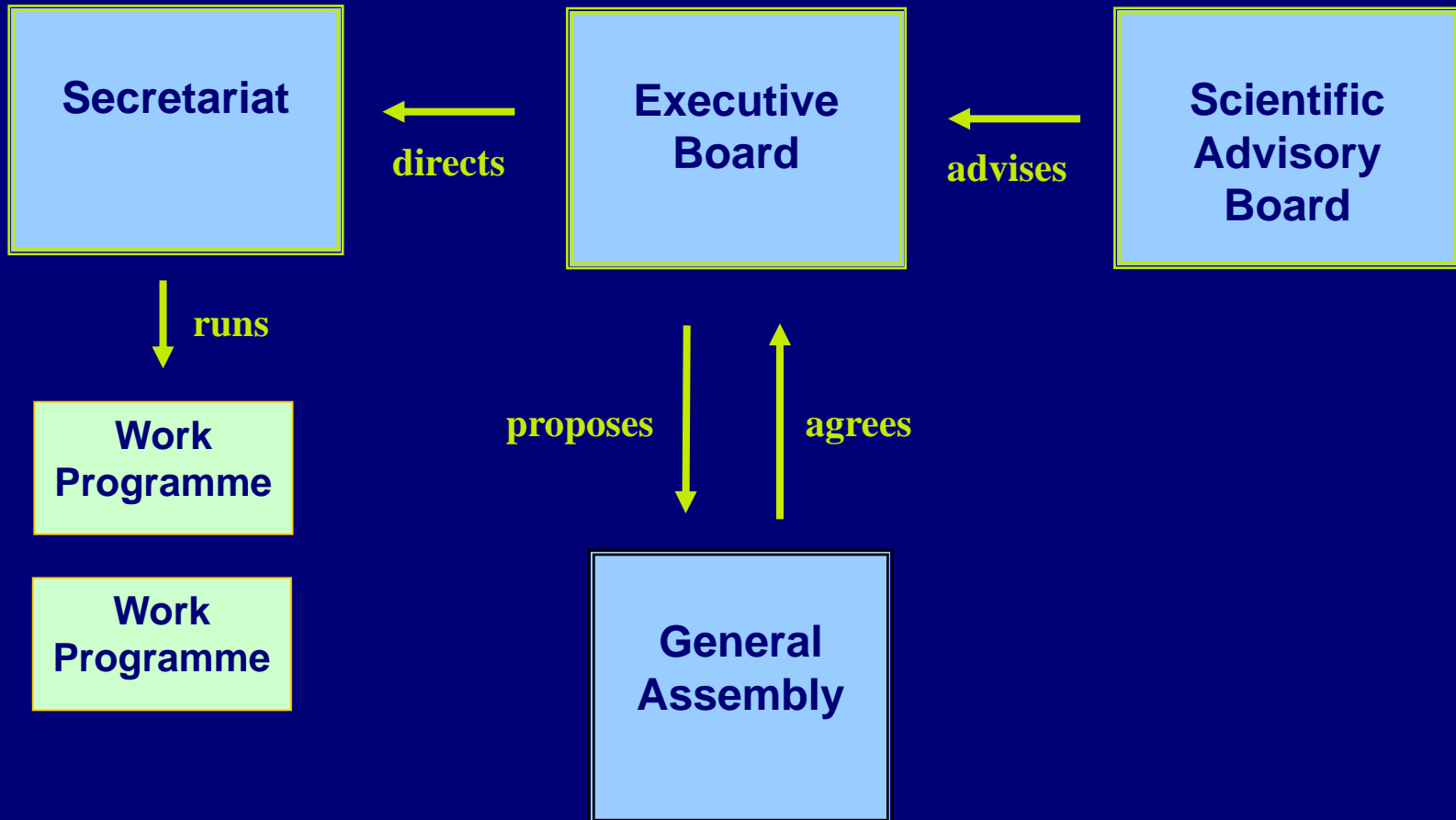


Scientific Collections International

SciColl – where are we now?

- Strategic planning and programme of work
- **Governance and management**
- Budget and financing start-up phase
- Outreach to scientific disciplines and countries

Governance and management



Governance and management

- Governance
- Secretariat
 - Build up over two years
 - Hosting secretariat: expressions of interest

Scientific Collections International

SciColl – where are we now?

- Strategic planning and programme of work
- Governance and management
- **Budget and financing start-up phase**
- Outreach to scientific disciplines and countries

Budget and financing start-up phase

	Year 1	Year 2	Year 3	Year 4
Secretariat	289	392	392	396
Committees, etc	80	80	80	80
Work Programme	60	205	290	290
Total	509	757	842	846

'000 Euros

Budget and financing start-up phase

- Budget
- Contributions
 - Years 1-3 primarily national contributions based on GERD
 - Years 4 > primarily membership contributions
 - (governance reflects the contribution profile)

Scientific Collections International

SciColl – where are we now?

- Strategic planning and programme of work
- Governance and management
- Budget and financing start-up phase
- Outreach to scientific disciplines and countries

Outreach to scientific disciplines and countries

- Through GSF country delegates
- Discussions agencies
 - European Science Foundation
- Scientific conference: Brussels 8-9 Feb 2010

International coordination of scientific collections: A global research infrastructure to understand changing environments

Outreach to scientific disciplines and countries

Scientific conference: Brussels 8-9 Feb 2010

International coordination of scientific collections: A global research infrastructure to understand changing environments

European Science Foundation : Euro 15,000

National Science Foundation : Euro16.000

Royal Belgian Institute for Natural Sciences: host

Expectations of this workshop

1. Broadening of scientific engagement
 - beyond nat. hist.
2. Views of workplan
 - collections operations
 - promoting interdisciplinary research
3. Assessing likely future engagement

What happens next?

- April 8-9, 2010: GSF spring meeting: request GSF endorsement of final proposal to establish SciColl
- May 2010: SciColl invitation to governments and institution to submit letters of intent to join SciColl
- May/June 2010: launch of request for proposals to host SciColl Secretariat
- Aug-Sept 2010: tipping point for letters of intent, if sufficient commitment establish Interim Executive Board
- October-November 2010:
 - Selection of Secretariat Host
 - Seek Executive Director
- Early-mid 2011: official launch of SciColl (establishment of Secretariat)

Questions?

