

SciColl

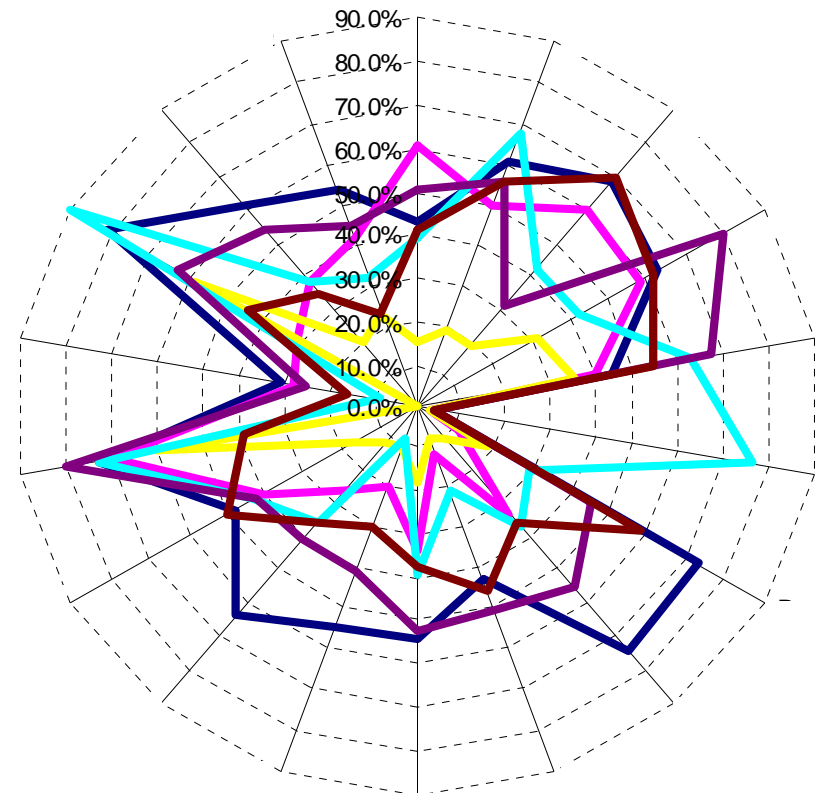


programme on collections management

Leo Kriegsman (NCB Naturalis)
Brussels, 9 Feb 2009

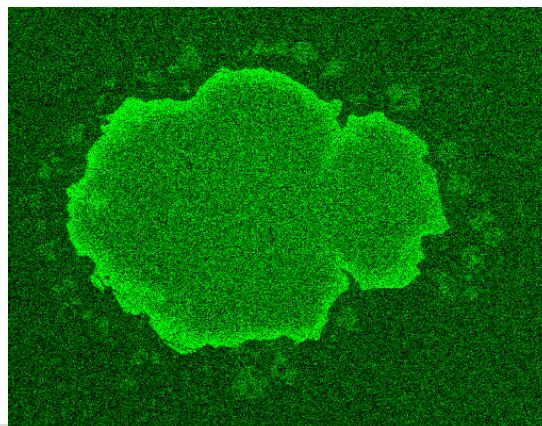
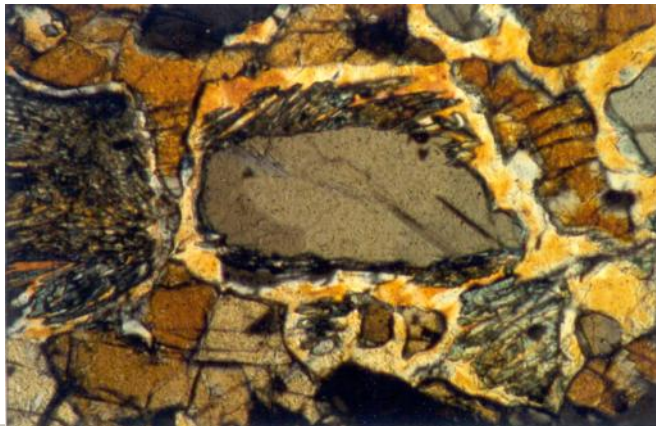
Collections Management (CM)

- broad range of activities:
 - *conservation & storage, physical & digital access*
 - *building, finance, management, staff training*
 - *broad specimen classification, preparation for analyses*



CM of scientific collections

- safeguard future scientific use of collections
 - morphology: microscopy, image analysis, SEM / TEM, microCT
 - analyses: chemical, isotopic, spectroscopic, DNA, ...
 - databases with references to specimens & links to specimen data
 - documentation accessible on-line & off-line
- multiple use => multiple storage ?



1	RMNHD50175_Ham	GGATAAATCTATGCCAATAAATGGCCATTGGAGTATTGGGATTTGTTGTGTGAGCACATCATATATTTACAGTAGGCATAGATGTAGATACACGAG
2	RMNHD48369_Ham	GGATAAATCTATGCCAATAAATGGCCATTGGAGTATTGGGATTTGTTGTGTGAGCACATCATATATTTACAGTAGGAATAGATGTAGACACACGAG
3	RMNHD48117_Ham	GGATAAATCTATGCCAATAAATGGCCATTGGAGTATTGGGATTTGTTGTGTGAGCACATCATATATTTACAGTAGGTATAGATGTAGACACACGAG
4	RMNHD50171_Ham	GGATAAATCTATGCCAATAAATGGCCATTGGAGTATTGGGATTTGTTGTGTGAGCACATCATATATTTACAGTAGGTATAGATGTAGACACACGAG
5	RMNHD48214_Ham	GAATAAATCTATGCCAATAAATGGCCATTGGAGTATTGGGATTTGTTGTGTGAGCACATCATATATTTACAGTAGGTATAGATGTAGACACACGAG
6	RMNHD48115_Ham	GAATAAATCTATGCCAATAAATGGCCATTGGAGTATTGGGATTTGTTGTGTGAGCACATCATATATTTACAGTAGGTATAGATGTAGACACACGAG
7	RMNHD48372_Ham	G-ATAAATCTATGCCAATAAATG-CCATTG-AGTATTGGGATTTGTTGTGTGAGC-CATCATATATTTACAGTAGGCATAGATGTAGATACCGAG
8	RMNHD47472_Ham	GGATAAATCTATGCCAATAAATGGCCATTGGAGTATTGGGATTTGTTGTGTGAGCACATCATATATTTACAGTAGGTATAGATGTAGACACACGAG
9	RMNHD48848_Ham	CCATAAATCTATGCCAATAAATGGCCATTGGAGTATTGGGATTTGTTGTGTGAGCACATCATATATTTACAGTAGGTATAGATGTAGACACACGAG

some recent initiatives related to CM

- major efforts to improve quality assessment
 - *biological collections: ISBER*
 - *natural history collections: SYNTHESYS*
- efforts to increase digital access to scientific collections
 - *digitising key objects and related archives (e.g., African Plants Initiative)*
 - *describing subcollections at metadata level (e.g., GBIF)*
- building an overarching organisation
 - *SciColl*



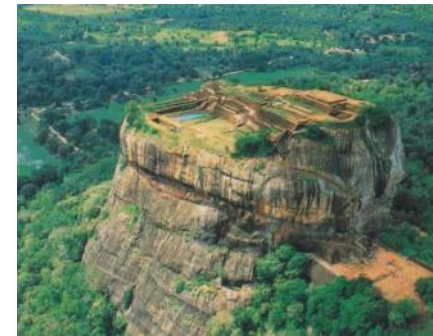
some challenges in single collection domains

- prioritising object-level digitisation
- targeted acquisition, often restricted by space & funds & laws
- increasing efficiency of storage systems
- optimizing environmental monitoring levels
- streamlining the work flow of basic operations
- data and/or specimen repatriation



challenges at higher dimension (SciColl)

- confront demands & best practices in different disciplines
 - *new users may add new requirements to digital & physical access in provider's discipline (& different ontologies)*
 - *specimens must obey requirements of user's discipline*
 - conservation state, documentation quality, analytical purity, etc.
 - *this will influence mutual thinking on collection quality*
- formulate overarching research programmes
 - *may help to prioritise object-level digitisation*
 - *may influence curation levels for (sub)collections*
- bring together specialised collection institutions and those where collections are “collateral”
- spread excellence



framework for a programme of work

- develop through open dialogue between collections communities
- working groups, meetings, web activities
- possible components:
 - *meet challenges of world-class research using / needing scientific collections internationally & across disciplines*
 - *raise & spread community standards of management, curatorial & training practices in CM*
 - *compile & disseminate good practices*
 - *design performance indicators & self-evaluation systems*
 - *provide information platform (helpdesk?) on CM*
 - *develop staff training modules & manuals*

possible Working Groups

- CM aspects of cross-disciplinary collection use
 - *start from main scientific questions*
 - *translate to CM needs & actions*
 - *look at long-term (scoping exercise?)*
- common CM portal
 - *standards, best practices, manuals, links, clearing house?*
 - *discussion fora, helpdesk*
 - *on-line training ?*
- quality assessment
 - *design common format for collection surveys (metadata)*
 - *new performance indicators (e.g., fitness for use)*
 - *update & upgrade collection databases (content, interoperability / wrappability)*

next talks in this session: good examples

- Global Biological Resource Centre Network
- Korea National Research Resource Center
- EU FP6/7 programme SYNTHESYS